

Technical Data

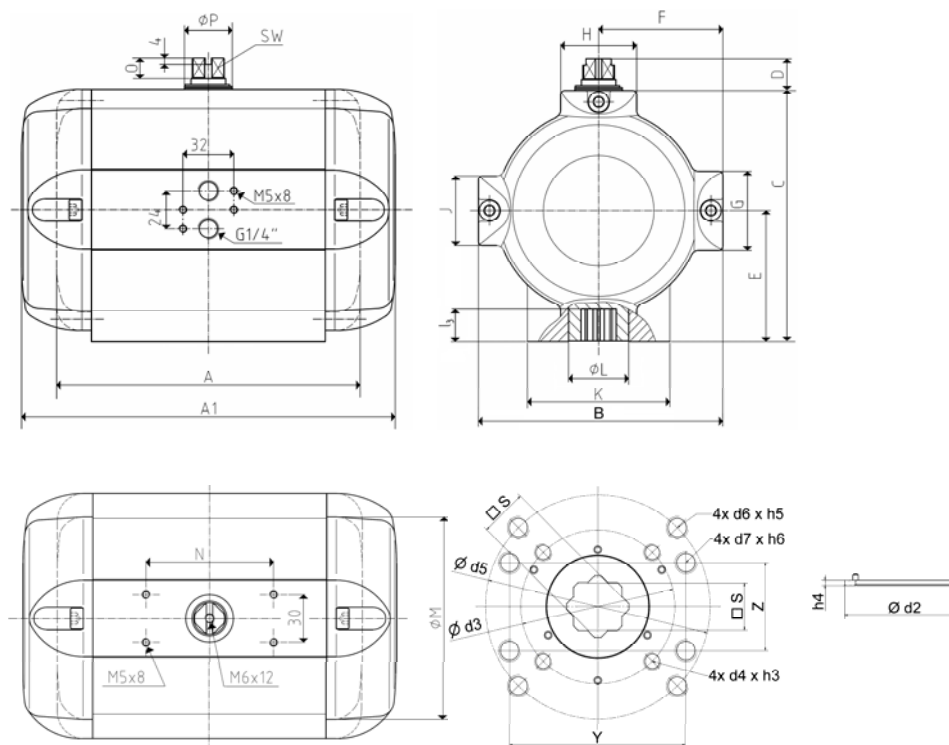
| | |
|-------------------------------------|--|
| Design : | Pneumatic double-piston quarter turn actuator |
| Design features : | Rack-and-pinion system, piston guide via guide rods |
| Angle of rotation : | 0°-135° |
| Air pressure supply : | mind. 2 bar, max. 8 bar |
| Operating medium : | Dry and filtered compressed air |
| Ambient temperature : | -25°C to +80°C |
| Mounting position : | any |
| Resistance to corrosion : | Industrial atmosphere |
| Lubrication : | Life time lubrication with grease ISO 51825-K2K-30 |
| Seals : | NBR-O-Rings, 70 Shore |
| Coatings : | Housing anodized and colour sealed End caps - CED cathodic electrodeposition |
| Maintenance and inspection : | AMG actuators are free of maintenance within the life time. Provided that: <ul style="list-style-type: none"> • the actuator is properly mounted • the operating medium used is clean and non-aggressive • the actuator is operated under normal ambient conditions • the actuator is used in compliance with the intended use (see assembly and maintenance manual) |
| Applied standard: | DIN EN ISO 5211, DIN EN 15714-3, VDI / VDE 3845, DIN 79 |
| Options: | Adjustable inner / outer travel stops up to +/- 5° via travel-stop-module (TSM) Ambient temperature up to +100°C Ambient temperature down to -40°C Sealing elements made of FKM (viton) or alternatively fluorosilicone Tailor made mounting kits and dimensioning acc. To customer requirements Variable cycle times (fast / slow) Variable sens of rotation (clockwise / counterclockwise) Coating options: Hard-Coat, chemical nickelplating, plastic coating, special lacquer |



SAD - 135°

| | |
|--------------------------------------|-----|
| Size | 25 |
| Weight [kg] | 8,2 |
| Stroke volume [dm³] | 3,2 |
| Operating times [sec.] ¹⁾ | |
| OPEN | 0,6 |
| CLOSE | 0,6 |

1) operating times at 4,5 bar air pressure supply without load (standard values)



| Type | air torque Ma [Nm] at operating pressure pe [bar] | | | | | | | | | | | | | | | | | |
|--------|---|-----|---------|-----|-------|-----|---------|-----|-------|-----|---------|-----|-------|-----|---------|-----|-------|-----|
| | 2 bar | | 2,5 bar | | 3 bar | | 3,5 bar | | 4 bar | | 4,5 bar | | 5 bar | | 5,5 bar | | 6 bar | |
| | MIN | MAX | MIN | MAX | MIN | MAX | MIN | MAX | MIN | MAX | MIN | MAX | MIN | MAX | MIN | MAX | MIN | MAX |
| SAD 25 | 61 | | 79 | | 98 | | 115 | | 133 | | 151 | | 169 | | 187 | | 205 | |

| Design | SAD | |
|---------------------|-----------|-----|
| Size | 25 | |
| A (double-acting) | 244 | |
| A1 (single-acting) | - | |
| B | 154,5 | |
| C | 159 | |
| D | 20 | |
| E | 83 | |
| F | 78,5 | |
| G | 50 | |
| H | 48 | |
| K | 90 | |
| Ø L# | 38 | |
| J | 44 | |
| Ø M# | 130 | |
| N | 80 | |
| O | 12 | |
| Ø P# | 30 | |
| SW | 17 | |
| Connection ISO 5211 | F07 | F10 |
| Ø d2# | 55 | 70 |
| h4 | 2,5 | 2,5 |
| Ø d3# | 70 | |
| 4x d4xh3# | 4x M8x13 | |
| Ø d5# | 102 | |
| l3# | 20 | |
| s | 17 | |
| 4x d6xh5 | 4x M10x16 | |
| 4x d7xh6 | 4x M10x16 | |
| Y | 80 | |
| Z | 40 | |
| W1 | - | |
| X1 | - | |
| G1 | - | |