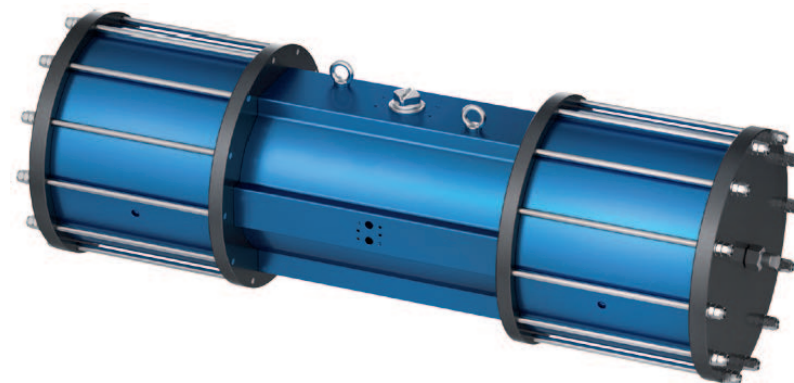


## DOUBLE-PISTON QUARTER TURN ACTUATORS

### TYPE SADP - M 180° **BR03C**

#### Technical Data

<b>Design :</b>	Pneumatic double-piston 180° actuator with a 90° middle position
<b>Design features :</b>	Rack-and-pinion system, piston guide via guide rods
<b>Angle of rotation :</b>	Fixed rotation angle 0° to 180° (normal operation) Spring fixed 90° middle position
<b>Air pressure supply :</b>	min. 2 bar, max. 8 bar
<b>Operating medium :</b>	Dry and filtered compressed air
<b>Ambient temperature :</b>	-25°C to +80°C
<b>Mounting position :</b>	any
<b>Resistance to corrosion :</b>	Industrial atmosphere
<b>Lubrication :</b>	Life time lubrication with grease ISO 51825-K2K-30
<b>Seals :</b>	NBR-O-Rings, 70 Shore
<b>Coatings :</b>	Housing anodized and colour sealed End caps - CED Cathodic electrodeposition
<b>Maintenance and inspection :</b>	AMG actuators are free of maintenance within the life time. Provided that: <ul style="list-style-type: none"><li>• the actuator is properly mounted</li><li>• the operating medium used is clean and non-aggressive</li><li>• the actuator is operated under normal ambient conditions</li><li>• the actuator is used in compliance with the intended use (see assembly and maintenance manual)</li></ul>
<b>Applied standard:</b>	DIN EN ISO 5211, DIN EN 15714-3, VDI / VDE 3845, DIN 79



**SADF - M 180°**

AMG-**PESCH**®



AMG-**PESCH** GmbH  
Adam-Riese-Straße 1  
D - 50996 Köln  
Tel.: +49-(0) 22 36 - 89 16 - 0  
Fax: +49-(0) 22 36 - 89 16 - 73  
[info@amg-pesch.com](mailto:info@amg-pesch.com)  
[www.amg-pesch.com](http://www.amg-pesch.com)

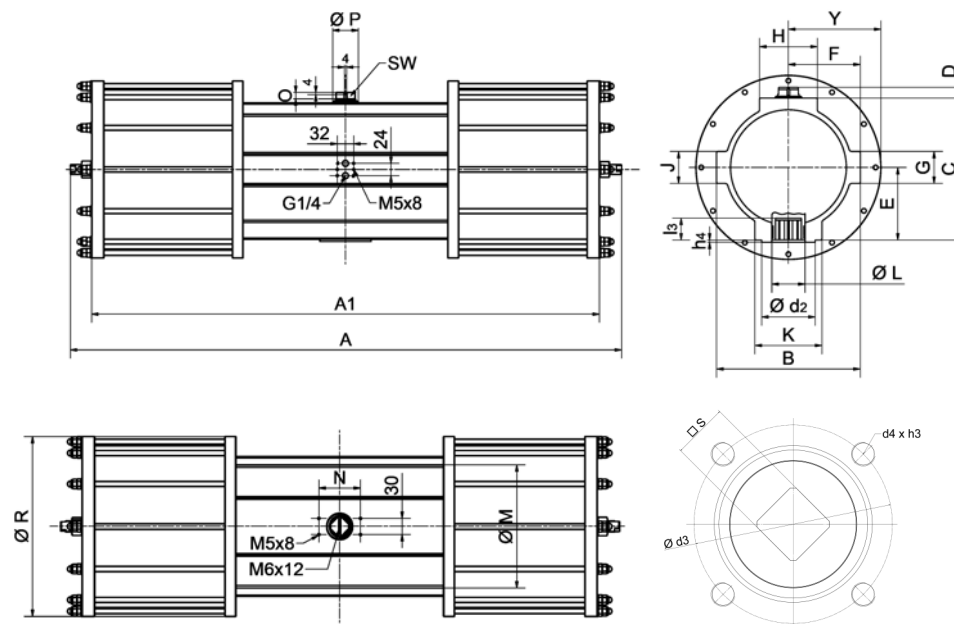
# DOUBLE-PISTON QUARTER TURN ACTUATORS

## TYPE SADP - M 180° **BR03C**

Size	40
Weight [kg]	
Type SADP - M	140
Stroke volume [dm³]	
Type SADP - M	34,5
Operating times [sec.] <sup>1)</sup>	
Type SADP - M <sup>2)</sup> OPEN	5,3
Type SADP - M <sup>2)</sup> CLOSE	5,3

1) operating times at 4,5 bar air pressure supply without load (standard values)

2) Type SADP-M with 24 springs



Type	number of springs n	spring-torque		air torque Ma [Nm] at operating pressure pe [bar]																											
		Ms [Nm]		2 bar		2,5 bar		3 bar		3,5 bar		4 bar		4,5 bar		5 bar		5,5 bar		6 bar		6,5 bar		7 bar		7,5 bar		8 bar			
		MIN	MAX	MIN	MAX	MIN	MAX	MIN	MAX	MIN	MAX	MIN	MAX	MIN	MAX	MIN	MAX	MIN	MAX	MIN	MAX	MIN	MAX	MIN	MAX	MIN	MAX	MIN	MAX		
SADF-M 40	-	-	-	336	435	534	629	727	827	924	1022	1121	1220	1314	1408	1502															
	12	398	665																												
	14	465	776																												
	16	528	880																												
	20	660	1100																												
	22	726	1210																												
	24	792	1320																												
	28	924	1540																												
	30	990	1650																												
	34	1122	1870																												
36	1188	1980																													

SUBJECT TO TECHNICAL MODIFICATION

Design	SADP - M
Size	40
A	1080
A1	992
B	268
C	266
D	20
E	136
F	134
G	60
H	108
K	125
Ø L	62
J	60
Ø M	236
N	80
O	12
Ø P	50
Ø R	345
Y	173
SW	30
Connection ISO 5211	F14
Ø d <sub>2</sub>	100
Ø d <sub>3</sub>	140
d <sub>4</sub> x h <sub>3</sub>	M16x25
Number of screws	4
h <sub>4</sub>	4
l <sub>3</sub>	40
s	36

AMG-PESCH®



AMG-PESCH GmbH  
Adam -Riese-Straße 1  
D - 50996 Köln  
Tel.: +49-(0) 22 36 - 89 16 - 0  
Fax: +49-(0) 22 36 - 89 16 - 73  
[info@amg-pesch.com](mailto:info@amg-pesch.com)  
[www.amg-pesch.com](http://www.amg-pesch.com)