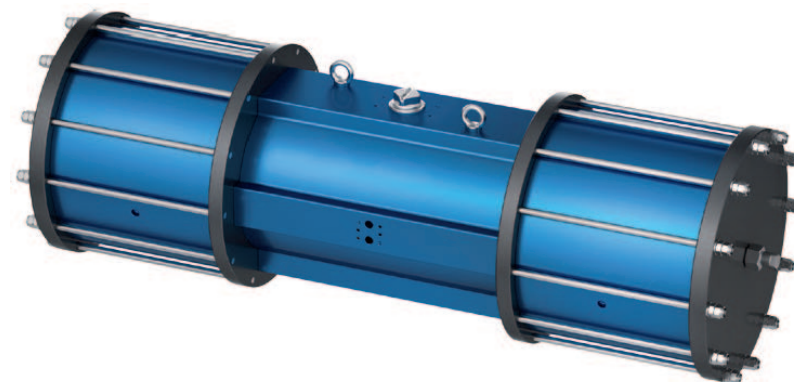


## DOUBLE-PISTON QUARTER TURN ACTUATORS

### TYPE SADP - M 180°

#### Technical Data

<b>Design :</b>	Pneumatic double-piston 180° actuator with a 90° middle position
<b>Design features :</b>	Rack-and-pinion system, piston guide via guide rods
<b>Angle of rotation :</b>	Fixed rotation angle 0° to 180° (normal operation) Spring fixed 90° middle position
<b>Air pressure supply :</b>	min. 2 bar, max. 8 bar
<b>Operating medium :</b>	Dry and filtered compressed air
<b>Ambient temperature :</b>	-25°C to +80°C
<b>Mounting position :</b>	any
<b>Resistance to corrosion :</b>	Industrial atmosphere
<b>Lubrication :</b>	Life time lubrication with grease ISO 51825-K2K-30
<b>Seals :</b>	NBR-O-Rings, 70 Shore
<b>Coatings :</b>	Housing anodized and colour sealed End caps - CED Cathodic electrodeposition
<b>Maintenance and inspection :</b>	AMG actuators are free of maintenance within the life time. Provided that: <ul style="list-style-type: none"><li>• the actuator is properly mounted</li><li>• the operating medium used is clean and non-aggressive</li><li>• the actuator is operated under normal ambient conditions</li><li>• the actuator is used in compliance with the intended use (see assembly and maintenance manual)</li></ul>
<b>Applied standard:</b>	DIN EN ISO 5211, DIN EN 15714-3, VDI / VDE 3845, DIN 79



**SADP - M 180°**

AMG-**PESCH**®



AMG-**PESCH** GmbH  
Adam-Riese-Straße 1  
D - 50996 Köln  
Tel.: +49-(0) 22 36 - 89 16 - 0  
Fax: +49-(0) 22 36 - 89 16 - 73  
[info@amg-pesch.com](mailto:info@amg-pesch.com)  
[www.amg-pesch.com](http://www.amg-pesch.com)

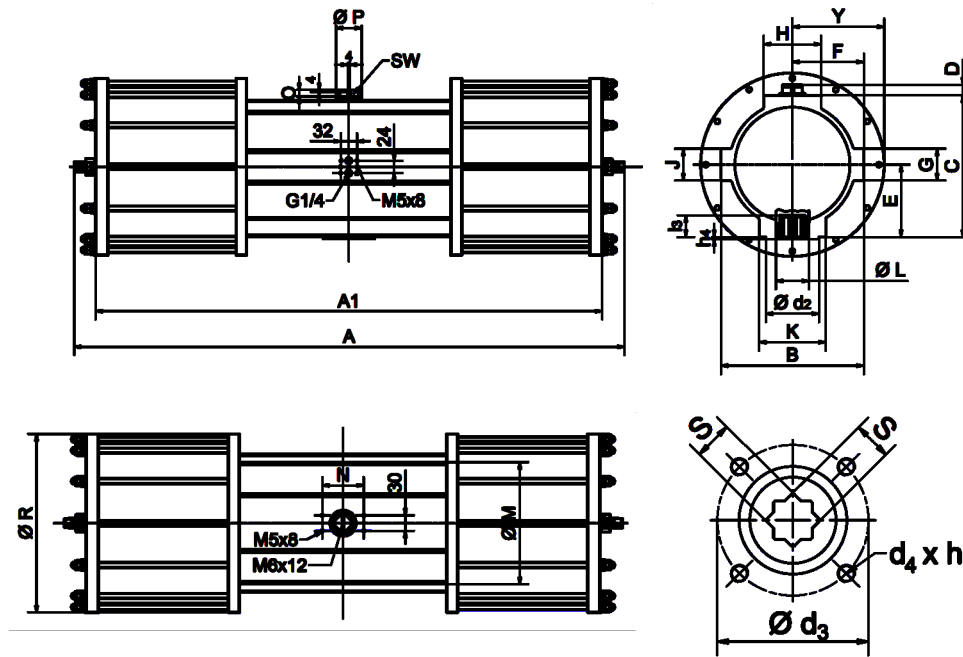
# DOUBLE-PISTON QUARTER TURN ACTUATORS

## TYPE SADF - M 180°

Size	30
Weight [kg]	
Type SADF - M	55
Stroke volume [dm³]	
Type SADF - M	9,4
Operating times [sek.] <sup>1)</sup>	
Type SADF - M <sup>2)</sup> OPEN	2,1
Type SADF - M <sup>2)</sup> CLOSE	2,1

1) operating times at 4,5 bar air pressure supply without load (standard values)

2) Type SADF-M with 24 springs



Type	number of springs n	spring torque		air torque Ma [Nm] at operating pressure pe [bar]																											
		Ms [Nm]		2 bar		2,5 bar		3 bar		3,5 bar		4 bar		4,5 bar		5 bar		5,5 bar		6 bar		6,5 bar		7 bar		7,5 bar		8 bar			
		MIN	MAX	MIN	MAX	MIN	MAX	MIN	MAX	MIN	MAX	MIN	MAX	MIN	MAX	MIN	MAX	MIN	MAX	MIN	MAX	MIN	MAX	MIN	MAX	MIN	MAX	MIN	MAX		
SADF-M 30	-	-		91		117		144		170		196		223		249		276		302		329		355		380		405			
	12	107	179																												
	14	125	208																												
	18	161	268																												
	20	179	298																												
	24	214	357																												
	26	232	387																												
	28	250	417																												
	32	286	476																												
	34	304	506																												

Design	SADF - M
Size	30
A	811
A1	742
B	174
C	174
D	20
E	89
F	87
G	50
H	64
K	90
Ø L	47
J	50
Ø M	145
N	80
O	12
Ø P	36
Ø R	229
Y	110
SW	17
Connection ISO 5211	F10
Ø d2	70
Ø d3	102
d4 x h3	M10x16
Number of screws	4
h4	3
l3	25
s	22

AMG-PESCH®



an ERICKS company

AMG-PESCH GmbH  
Adam-Riese-Straße 1  
D - 50996 Köln  
Tel.: +49-(0) 22 36 - 89 16 - 0  
Fax: +49-(0) 22 36 - 89 16 - 73  
[info@amg-pesch.com](mailto:info@amg-pesch.com)  
[www.amg-pesch.com](http://www.amg-pesch.com)

SUBJECT TO TECHNICAL MODIFICATION

MB SADF- M 180 / 2020 / E / 01