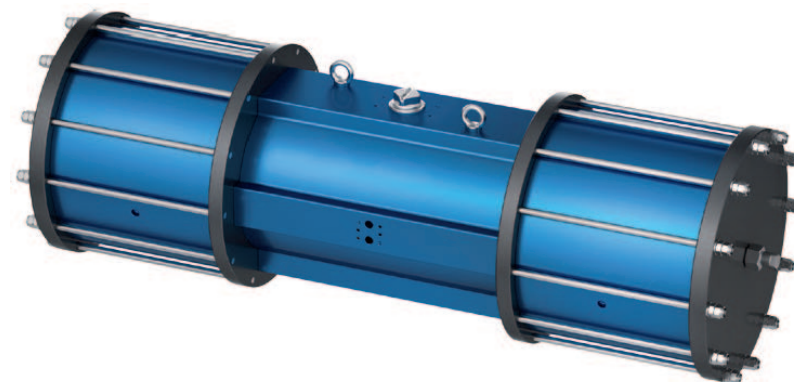


DOUBLE-PISTON QUARTER TURN ACTUATORS

TYPE SADP - M 180° **BR03C**

Technical Data

| | |
|-------------------------------------|--|
| Design : | Pneumatic double-piston 180° actuator with a 90° middle position |
| Design features : | Rack-and-pinion system, piston guide via guide rods |
| Angle of rotation : | Fixed rotation angle 0° to 180° (normal operation) Spring fixed 90° middle position |
| Air pressure supply : | min. 2 bar, max. 8 bar |
| Operating medium : | Dry and filtered compressed air |
| Ambient temperature : | -25°C to +80°C |
| Mounting position : | any |
| Resistance to corrosion : | Industrial atmosphere |
| Lubrication : | Life time lubrication with grease ISO 51825-K2K-30 |
| Seals : | NBR-O-Rings, 70 Shore |
| Coatings : | Housing anodized and colour sealed End caps - CED Cathodic electrodeposition |
| Maintenance and inspection : | AMG actuators are free of maintenance within the life time. Provided that: <ul style="list-style-type: none">• the actuator is properly mounted• the operating medium used is clean and non-aggressive• the actuator is operated under normal ambient conditions• the actuator is used in compliance with the intended use (see assembly and maintenance manual) |
| Applied standard: | DIN EN ISO 5211, DIN EN 15714-3, VDI / VDE 3845, DIN 79 |



SADP - M 180°

AMG-**PESCH**®



AMG-**PESCH** GmbH
Adam-Riese-Straße 1
D - 50996 Köln
Tel.: +49-(0) 22 36 - 89 16 - 0
Fax: +49-(0) 22 36 - 89 16 - 73
info@amg-pesch.com
www.amg-pesch.com

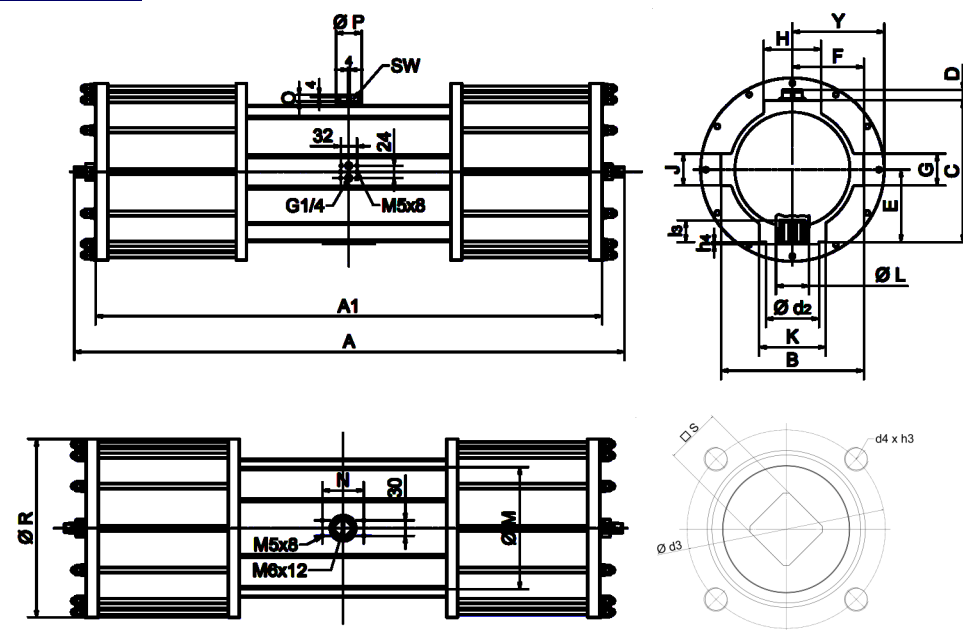
DOUBLE-PISTON QUARTER TURN ACTUATORS

TYPE SADF - M 180° BR03C

| | |
|--------------------------------------|-----|
| Size | 30 |
| Weight [kg] | |
| Type SADF - M | 55 |
| Stroke volume [dm³] | |
| Type SADF - M | 9,4 |
| Operating times [sek.] ¹⁾ | |
| Type SADF - M ²⁾ OPEN | 2,1 |
| Type SADF - M ²⁾ CLOSE | 2,1 |

1) operating times at 4,5 bar air pressure supply without load (standard values)

2) Type SADF-M with 24 springs



| Type | number of springs n | spring torque | | air torque Ma [Nm] at operating pressure pe [bar] | | | | | | | | | | | | | | | | | | | | | | | | | | | |
|-----------|---------------------|---------------|-----|---|-----|---------|-----|-------|-----|---------|-----|-------|-----|---------|-----|-------|-----|---------|-----|-------|-----|---------|-----|-------|-----|---------|-----|-------|-----|--|--|
| | | Ms [Nm] | | 2 bar | | 2,5 bar | | 3 bar | | 3,5 bar | | 4 bar | | 4,5 bar | | 5 bar | | 5,5 bar | | 6 bar | | 6,5 bar | | 7 bar | | 7,5 bar | | 8 bar | | | |
| | | MIN | MAX | MIN | MAX | MIN | MAX | MIN | MAX | MIN | MAX | MIN | MAX | MIN | MAX | MIN | MAX | MIN | MAX | MIN | MAX | MIN | MAX | MIN | MAX | MIN | MAX | MIN | MAX | | |
| SADF-M 30 | - | - | | 91 | | 117 | | 144 | | 170 | | 196 | | 223 | | 249 | | 276 | | 302 | | 329 | | 355 | | 380 | | 405 | | | |
| | 12 | 107 | 179 | | | | | | | | | | | | | | | | | | | | | | | | | | | | |
| | 14 | 125 | 208 | | | | | | | | | | | | | | | | | | | | | | | | | | | | |
| | 18 | 161 | 268 | | | | | | | | | | | | | | | | | | | | | | | | | | | | |
| | 20 | 179 | 298 | | | | | | | | | | | | | | | | | | | | | | | | | | | | |
| | 24 | 214 | 357 | | | | | | | | | | | | | | | | | | | | | | | | | | | | |
| | 26 | 232 | 387 | | | | | | | | | | | | | | | | | | | | | | | | | | | | |
| | 28 | 250 | 417 | | | | | | | | | | | | | | | | | | | | | | | | | | | | |
| | 32 | 286 | 476 | | | | | | | | | | | | | | | | | | | | | | | | | | | | |
| | 34 | 304 | 506 | | | | | | | | | | | | | | | | | | | | | | | | | | | | |

SUBJECT TO TECHNICAL MODIFICATION

| Design | SADF - M |
|---------------------------------|----------|
| Size | 30 |
| A | 811 |
| A1 | 742 |
| B | 174 |
| C | 174 |
| D | 20 |
| E | 89 |
| F | 87 |
| G | 50 |
| H | 64 |
| K | 90 |
| Ø L | 47 |
| J | 50 |
| Ø M | 145 |
| N | 80 |
| O | 12 |
| Ø P | 36 |
| Ø R | 229 |
| Y | 110 |
| SW | 17 |
| Connection ISO 5211 | F10 |
| Ø d ₂ | 70 |
| Ø d ₃ | 102 |
| d ₄ x h ₃ | M10x16 |
| Number of screws | 4 |
| h ₄ | 3 |
| l ₃ | 25 |
| s | 22 |

AMG-PESCH®



an ERICKS company

AMG-PESCH GmbH
Adam-Riese-Straße 1
D - 50996 Köln
Tel.: +49-(0) 22 36 - 89 16 - 0
Fax: +49-(0) 22 36 - 89 16 - 73
info@amg-pesch.com
www.amg-pesch.com